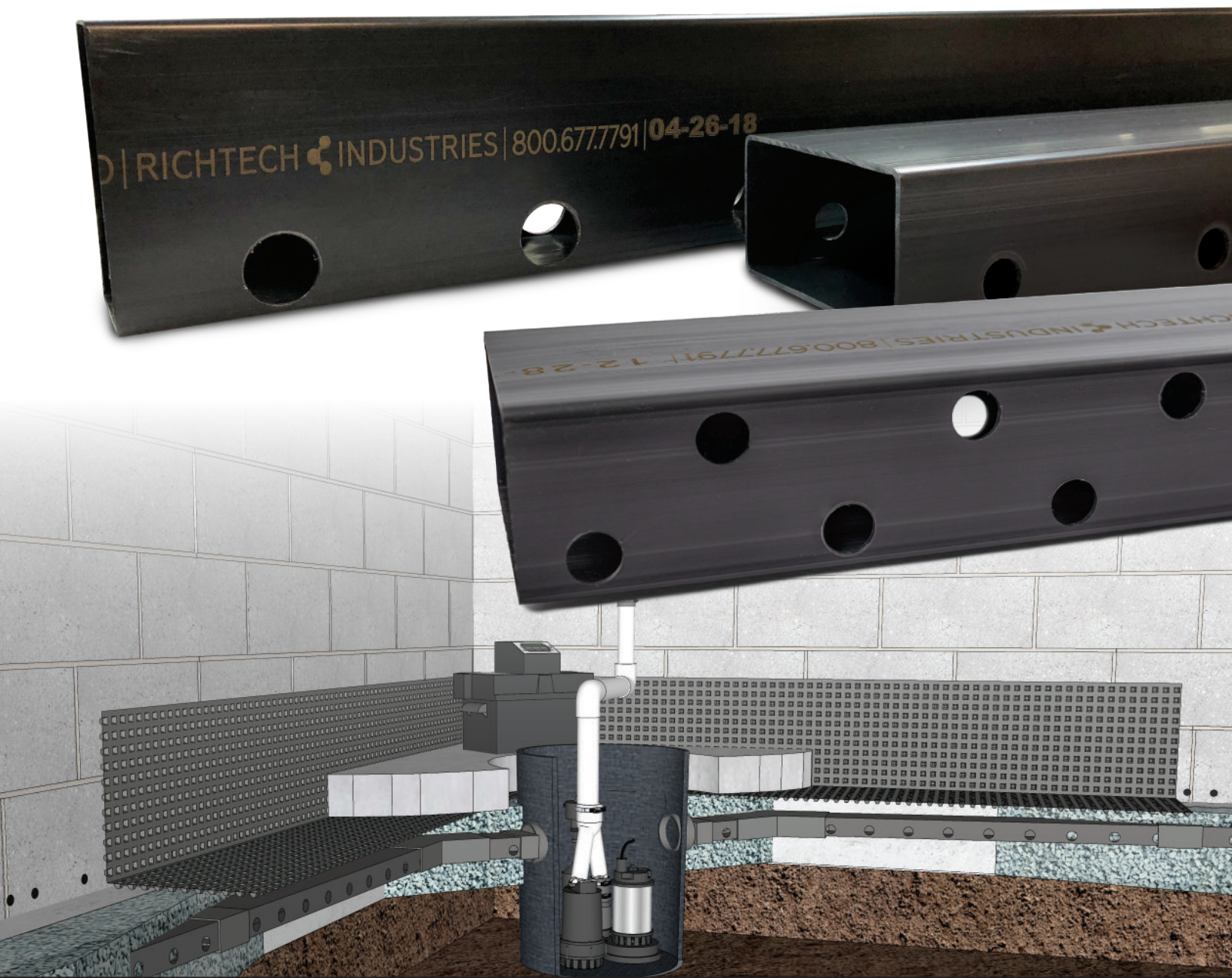


AN  
OVERVIEW  
OF THE

# QUIKFLO

ADVANCED  
DRAINAGE  
SYSTEM

QuikFlo is an advanced drainage product designed specifically for interior foundation waterproofing. QuikFlo collects the maximum amount of water from under the slab in silt, sand and clay soils and directs it into the basin. Its squared-edge design requires less gravel and faster installation.



AN  
OVERVIEW  
OF THE

# QUIKFLO

ADVANCED  
DRAINAGE  
SYSTEM

A complete line of QuikFlo fittings allows the installer to quickly and easily design and piece together a system that will channel water into the sump basin, relieving hydrostatic pressure against the foundation.



## Horizontal Placement:

Placing QuikFlo horizontally next to the footer requires a shallow trench and is designed to alleviate groundwater and minor hydrostatic pressure.

## Vertical Placement:

For homes with serious hydrostatic pressure problems, placing QuikFlo vertically next to the footer requires a deeper trench and alleviates problems caused by a high water table.



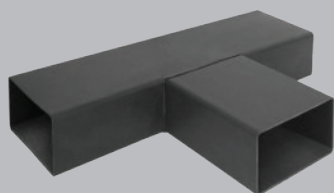
90 Degree Corner



45 Degree Corner



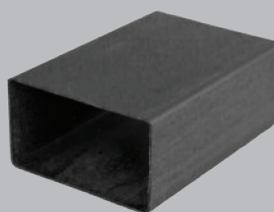
Clean Out Port



T-Connector



Basin Adapter



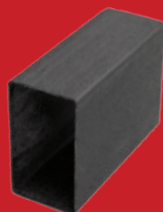
Connector



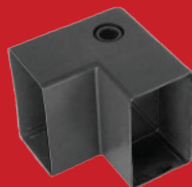
New Quad-Cut Pipe is available! Two rows of 5/8" diameter holes on each side will extend the life of the drainage system by ensuring flow even as sediment builds up over time.



Clean Out Port



Connector



90 Degree Corner



Basin Adapter

